

# EAGLES COVE

(A REPLAT OF SHORE LINE ESTATES, UNIT 3, LOTS 15-21, BLOCK 7; LOTS 3-22, BLOCK 10; AND LOTS 6-13, BLOCK 11)

THE ORIGINAL SUBDIVISION PLAT IS FILED OF RECORD IN VOLUME 3, PAGE 1, ARCHER COUNTY PLAT RECORDS.

⊙ = 1/2 INCH IRON ROD

**↑ HOMES FOR SALE**

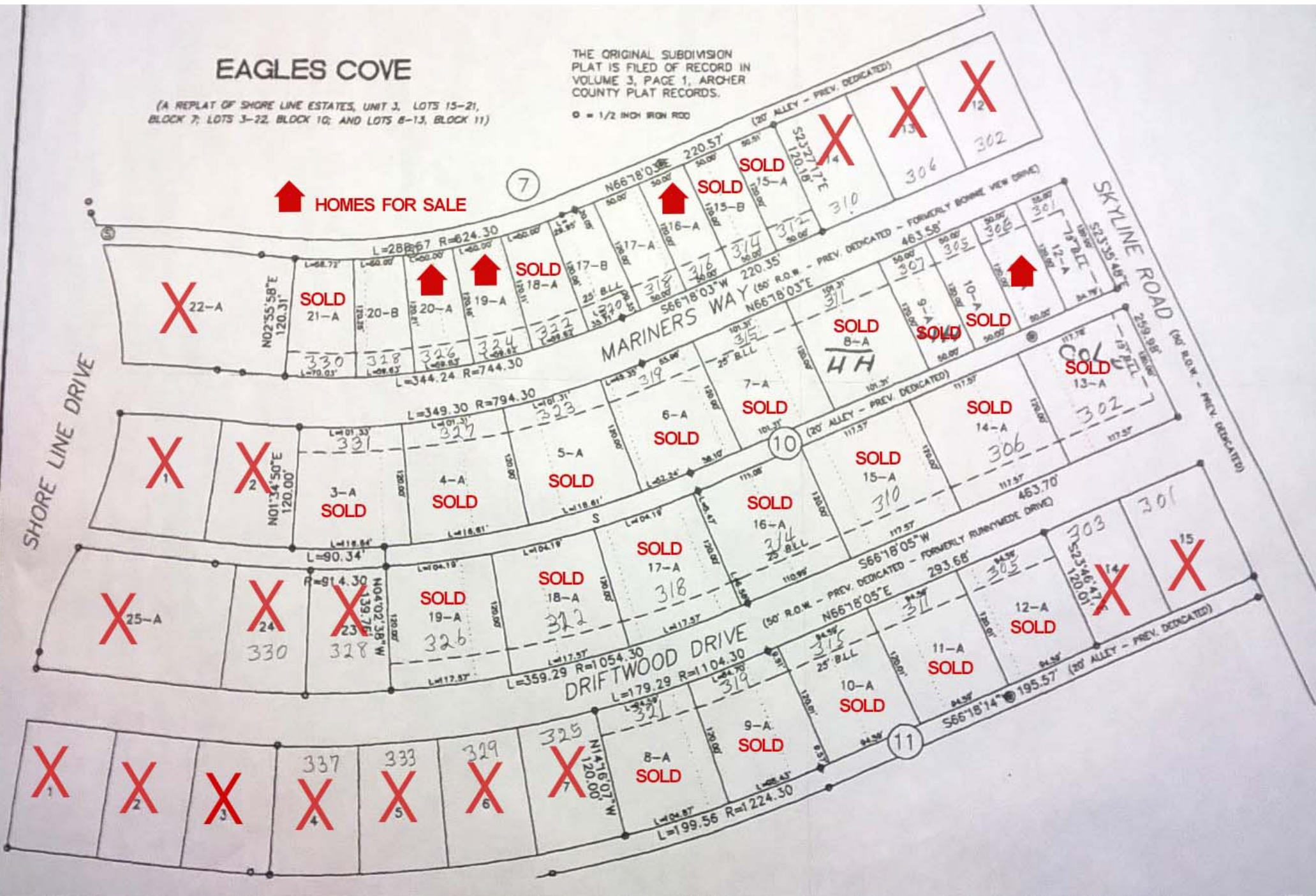
7

SHORE LINE DRIVE

MARINERS WAY

DRIFTWOOD DRIVE

SKYLINE ROAD



X 22-A

SOLD 21-A

↑

SOLD 18-A

SOLD 15-A

SOLD 15-A

X 14

X 13

X 12

X 1

X 2

SOLD 3-A

SOLD 4-A

SOLD 5-A

SOLD 6-A

SOLD 7-A

SOLD 8-A

SOLD 9-A

SOLD 10-A

SOLD 13-A

X 25-A

X 24

X 23

SOLD 19-A

SOLD 18-A

SOLD 17-A

SOLD 16-A

SOLD 15-A

SOLD 14-A

SOLD 13-A

X 1

X 2

X 3

X 4

X 5

X 6

X 7

SOLD 8-A

SOLD 9-A

SOLD 10-A

SOLD 11-A

SOLD 12-A

X 14

X 15